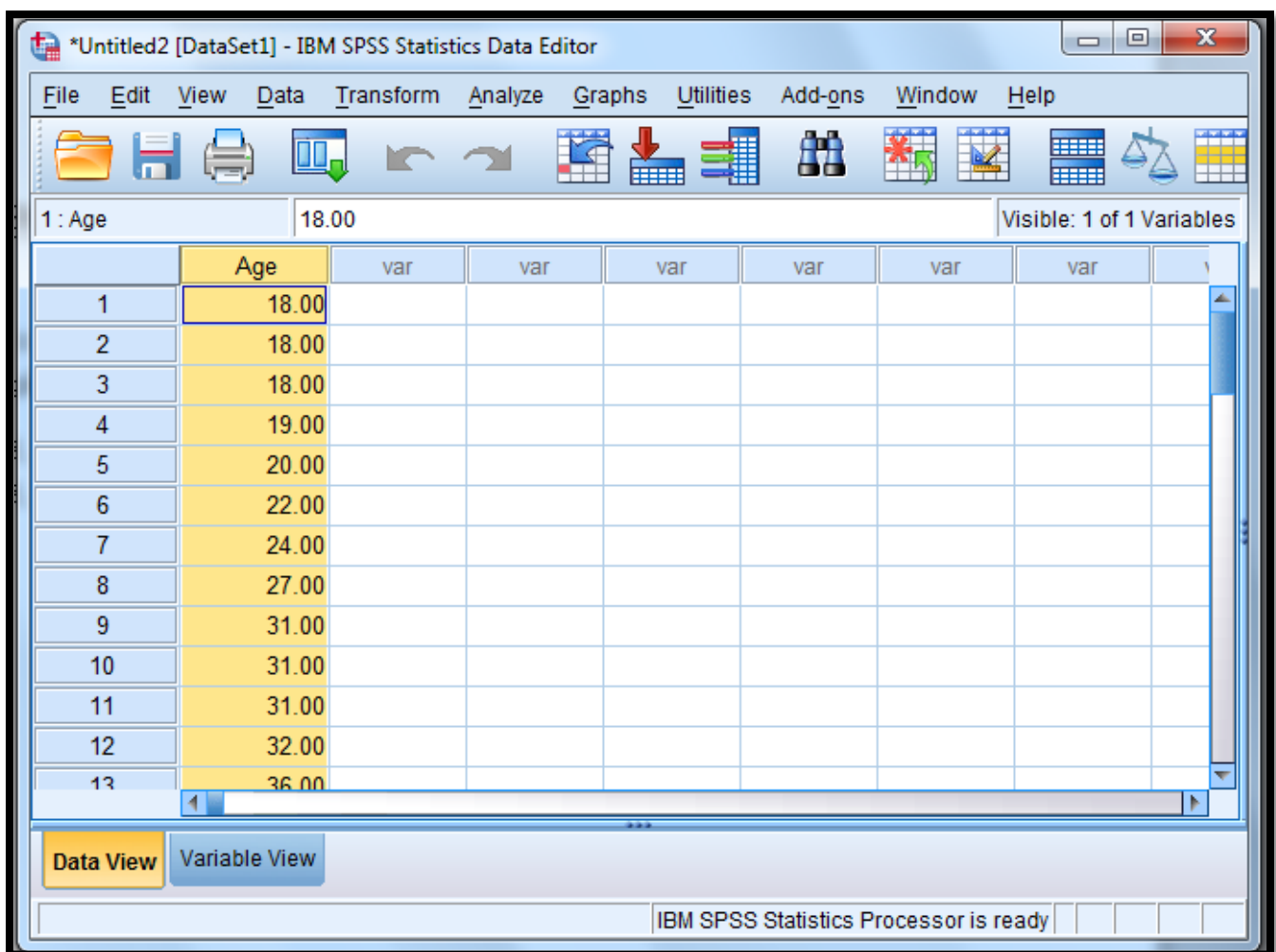


Generating a Histogram in SPSS

In order to generate a histogram in SPSS, firstly you must input your data.
For example for the following data set of 30 nurses ages:

18, 18, 18, 19, 20, 22, 24, 27, 31, 31, 31, 32, 36, 38, 39, 39, 44, 45, 47, 47, 48,
49, 49, 53, 55, 56, 56, 60, 61, 77.

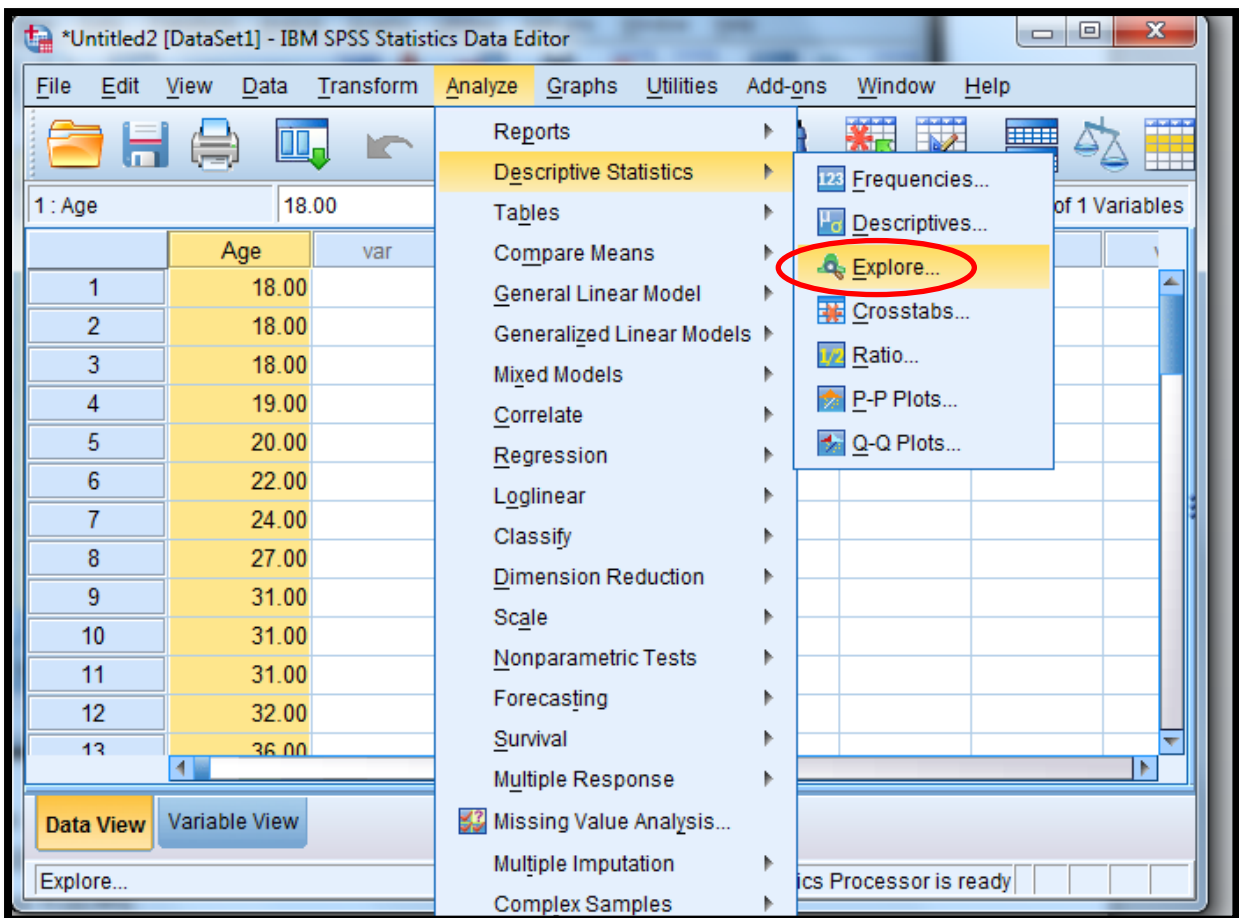
In SPSS:



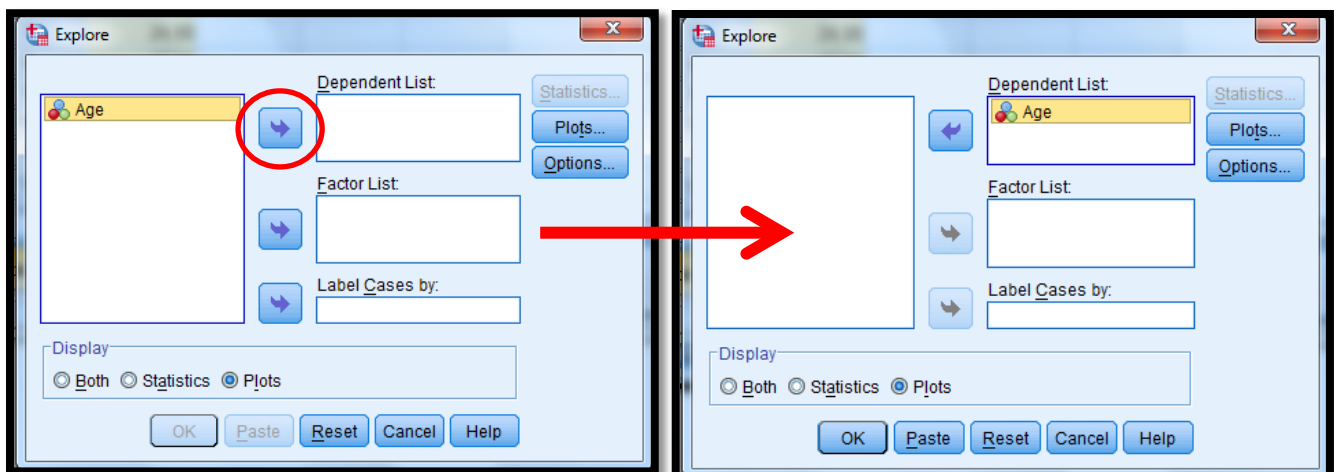
(This data can be easily inputted by hand). There are two easy ways to generate a histogram for this data.

First Method:

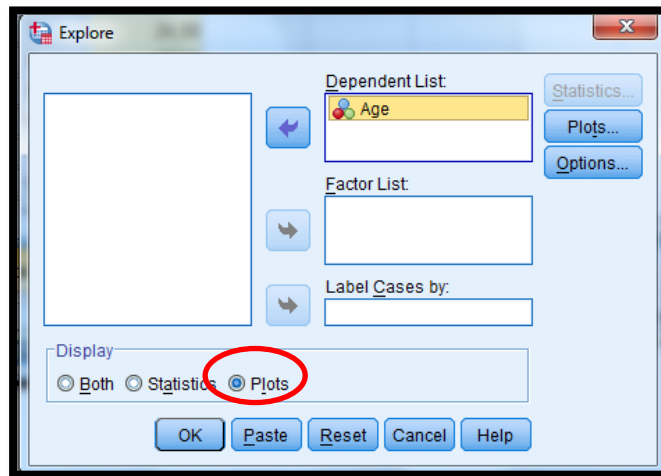
To generate a histogram, in the toolbar at the top select “Analyze”, then “Descriptive Statistics” then “Explore” as follows:



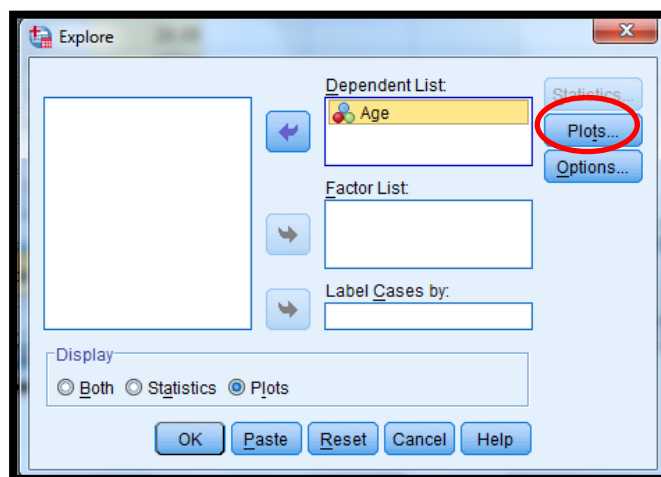
This opens a window which allows us to define a histogram. Firstly we move the variable we want to use into the “Dependent List”, by selecting the variable then using the arrow to move it across, as follows:



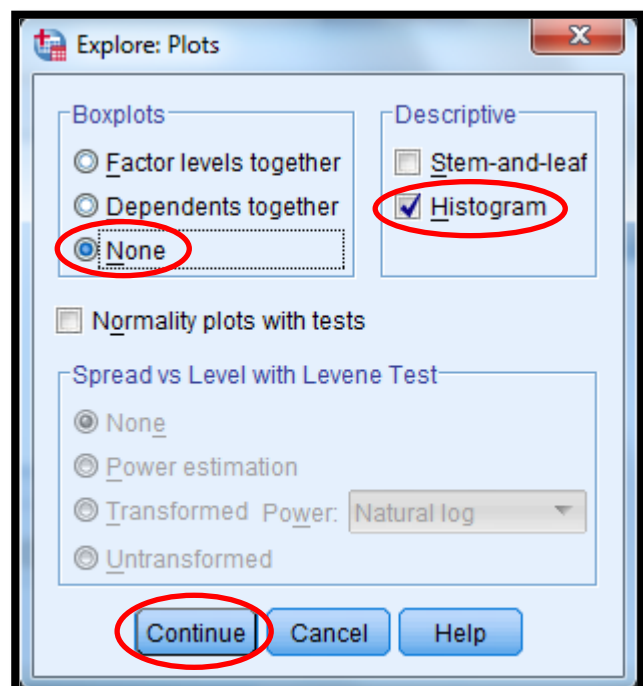
As it is only a histogram we are interested in, in the display box make sure you select the “plots” option only, as follows:



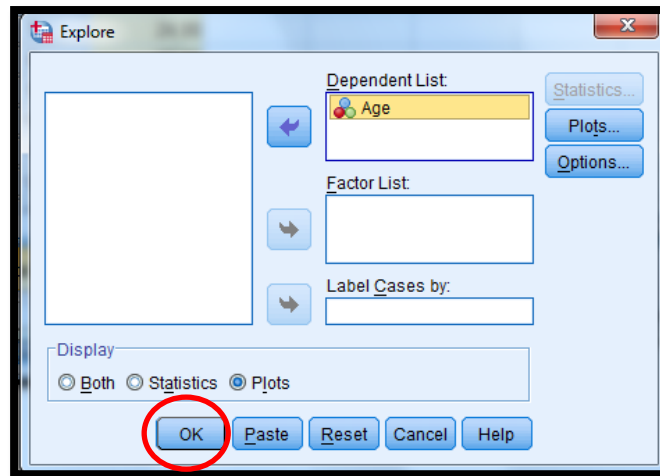
Now select the “plots” option on the right hand side:



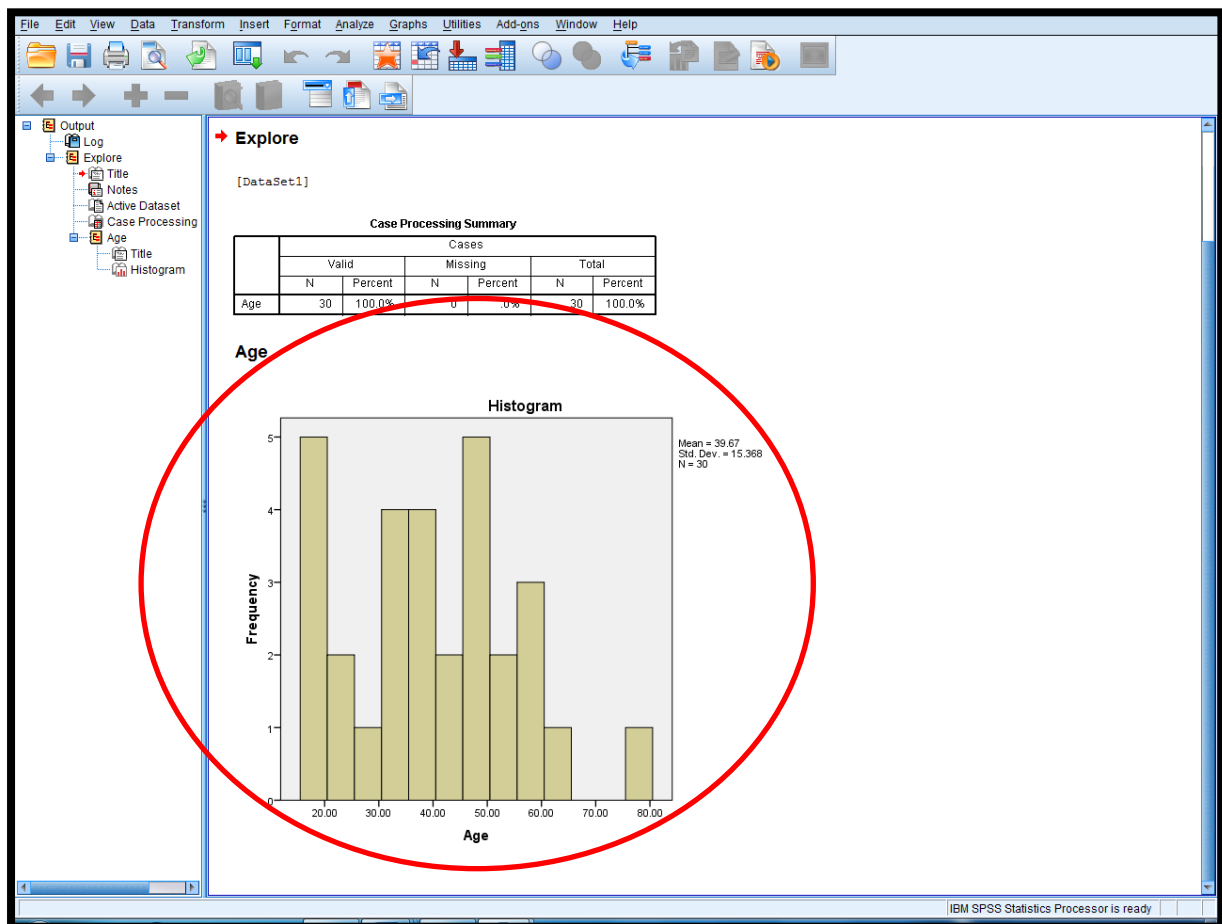
A new window will appear. Here we chose “None” for Boxplots and “Histogram” for Descriptive and select “Continue”, as follows:



Finally, select “Okay”, as follows:

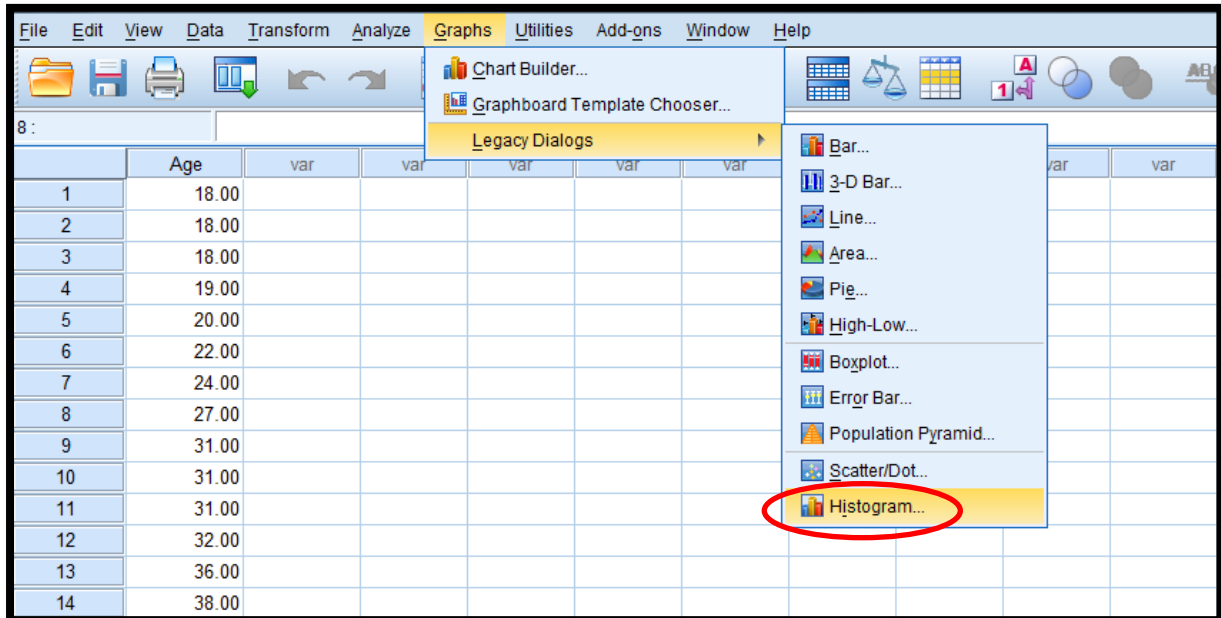


A new window will then open displaying the histogram, as follows:

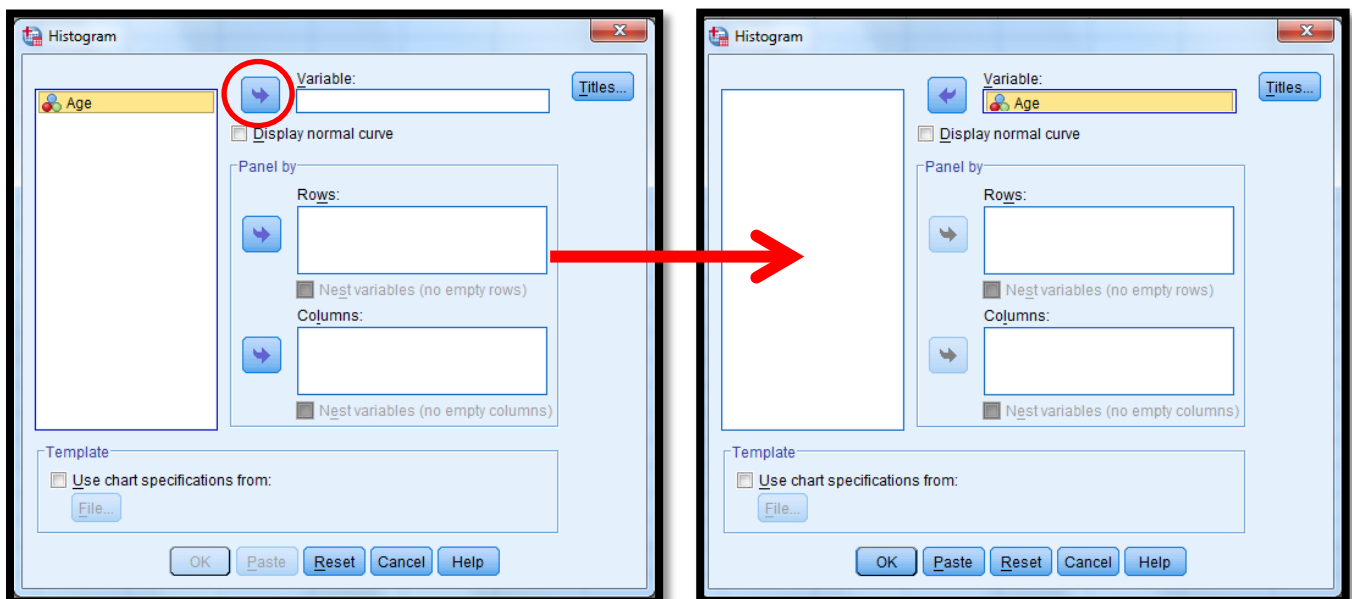


Second Method:

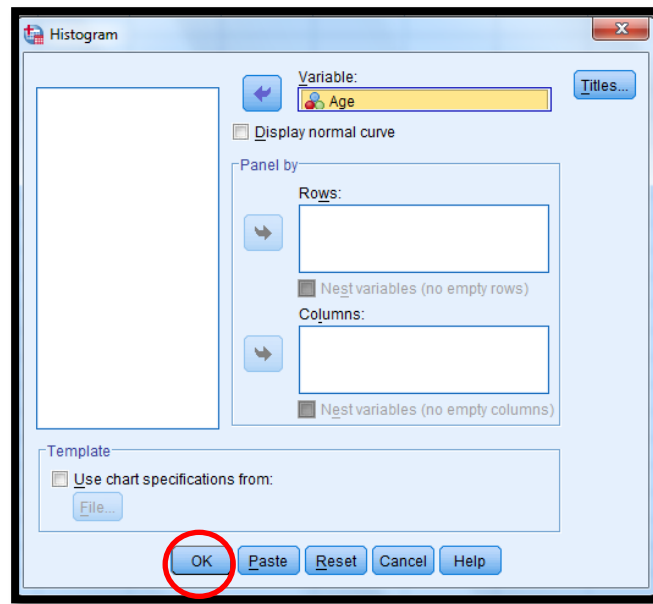
To generate a histogram, in the toolbar at the top select “**Graphs**”, then “**Legacy Dialogs**” then “**Histogram**” as follows:



This opens a window that allows us to choose which variables we wish to make histograms of. Firstly we move the variable we want to use into the “**Variable**” box, by selecting the variable then using the arrow to move it across, as follows:



Finally, select “Okay”, as follows:



A new window will then open displaying the histogram, as follows:

