

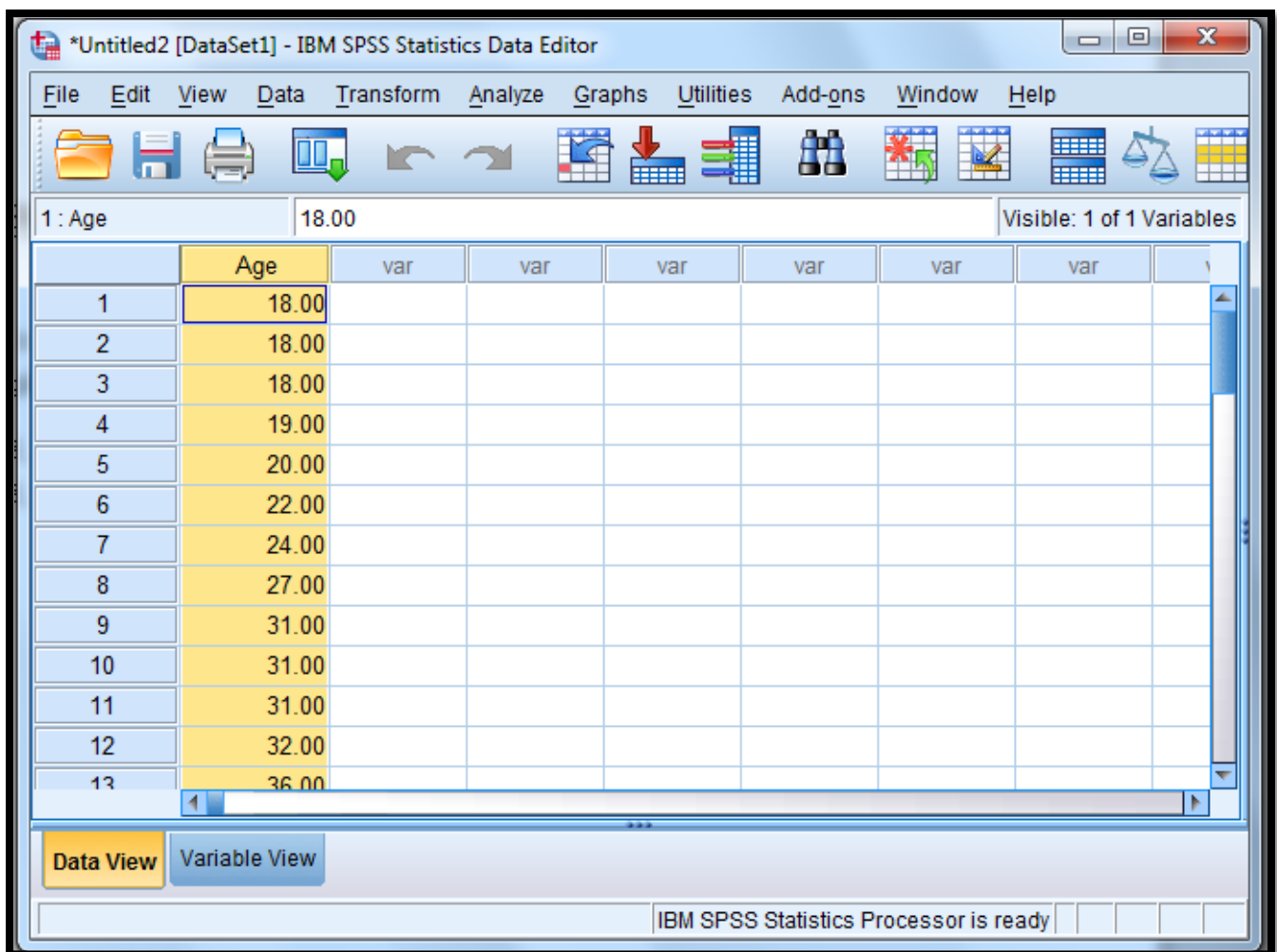
Generating a Quantile Quantile Plot (QQ Plot) in

SPSS

In order to generate a QQ plot in SPSS, firstly you must input your data. For example for the following data set of 30 nurses ages:

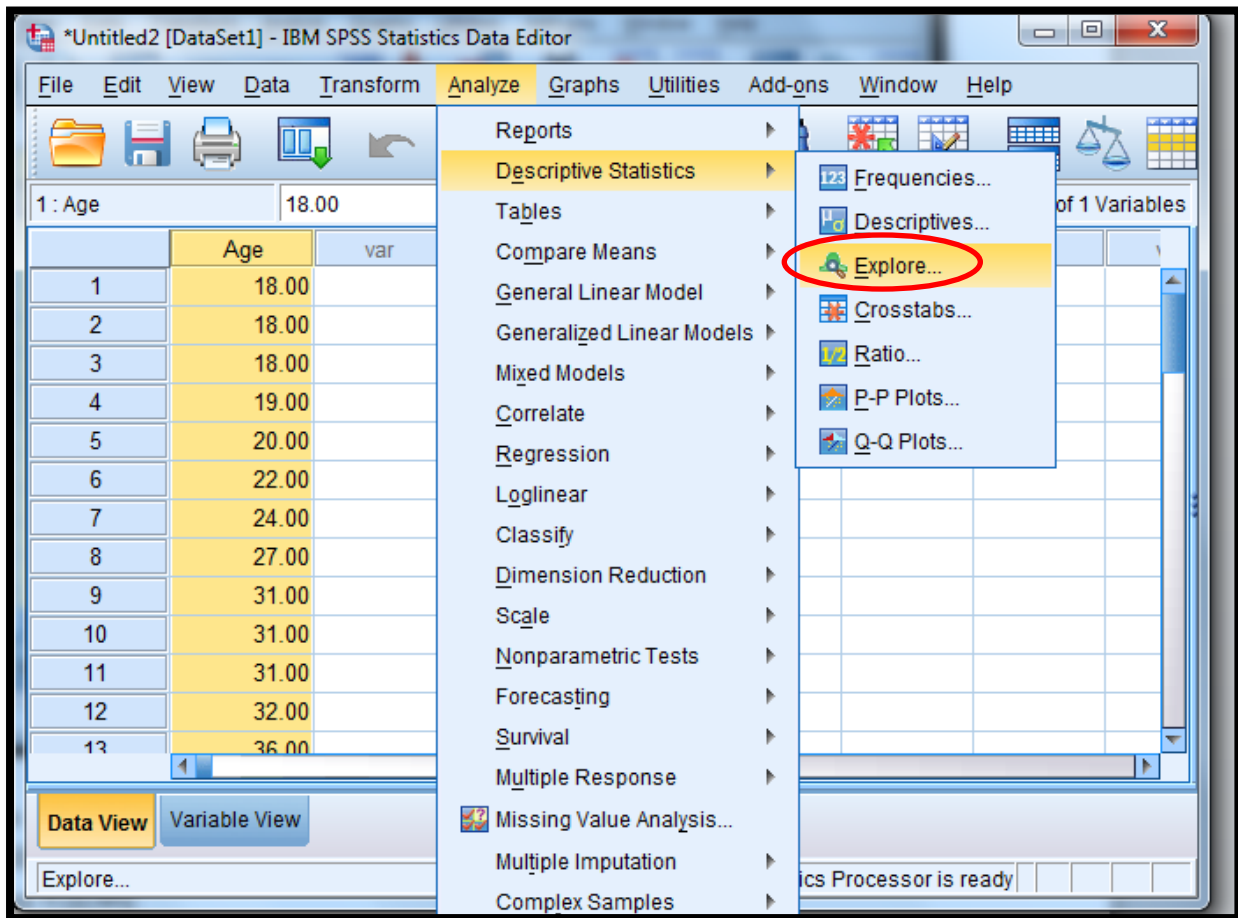
18, 18, 18, 19, 20, 22, 24, 27, 31, 31, 31, 32, 36, 38, 39, 39, 44, 45, 47, 47, 48, 49, 49, 53, 55, 56, 56, 60, 61, 77.

In SPSS:

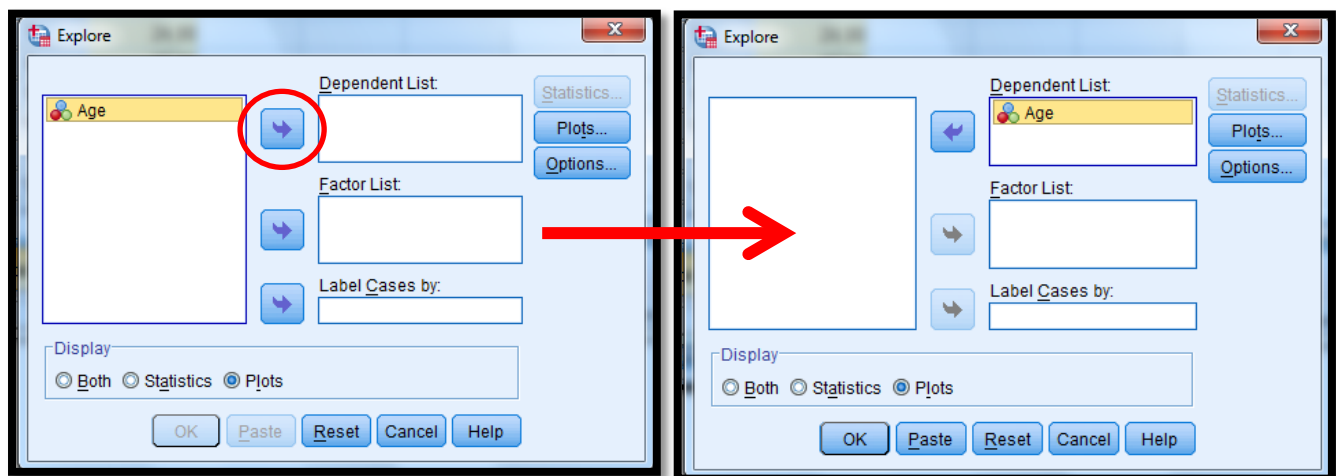


(This data can be easily inputted by hand). There is then an easy method to generate a QQ plot for this data.

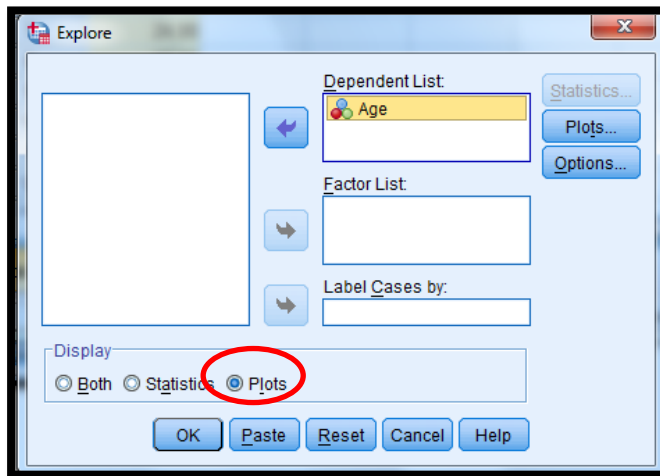
To generate a QQ plot, in the toolbar at the top select “Analyze”, then “Descriptive Statistics” then “Explore” as follows:



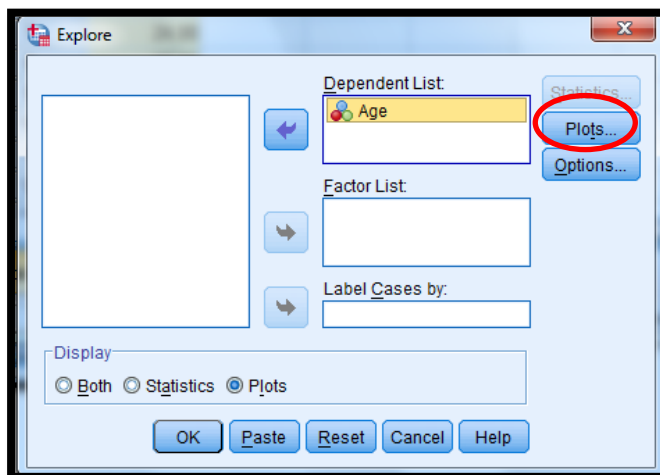
This opens a window which allows us to define a QQ plot. Firstly we move the variable we want to use into the “Dependent List”, by selecting the variable then using the arrow to move it across, as follows:



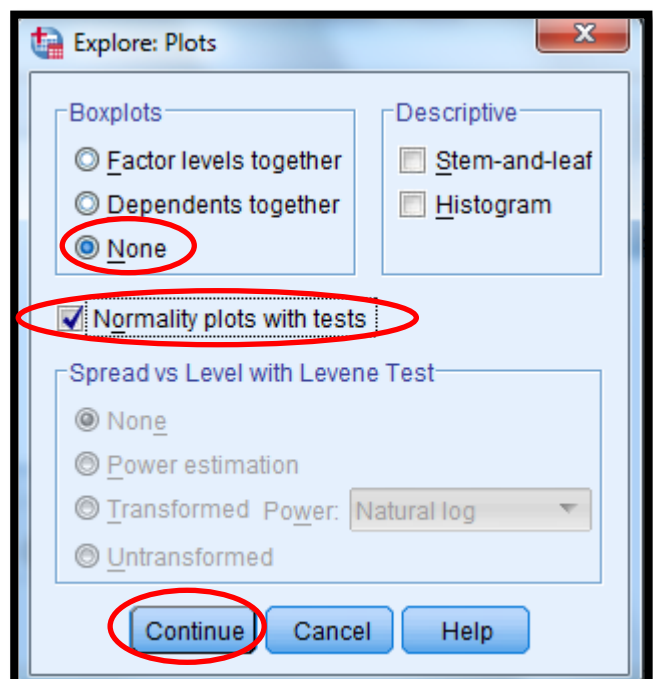
As it is only a QQ plot we are interested in, in the display box make sure you select the “plots” option only, as follows:



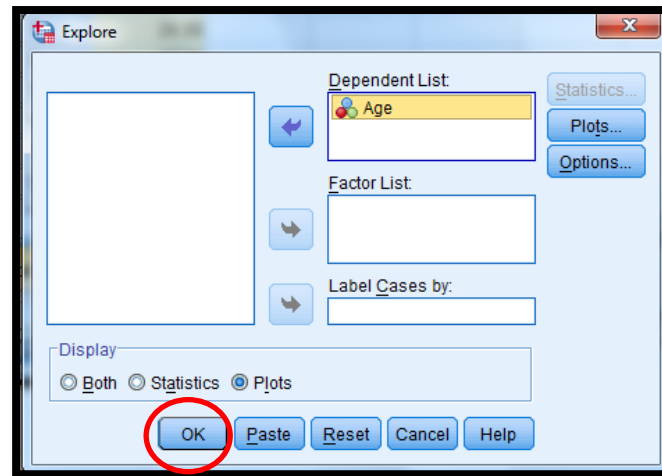
Now select the “plots” option on the right hand side:



A new window will appear. Here we chose “None” for Boxplots and “Normality plots with tests” and select “Continue”, as follows:



Finally, select “Okay”, as follows:



A new window will then open displaying the QQ plot, as follows:

