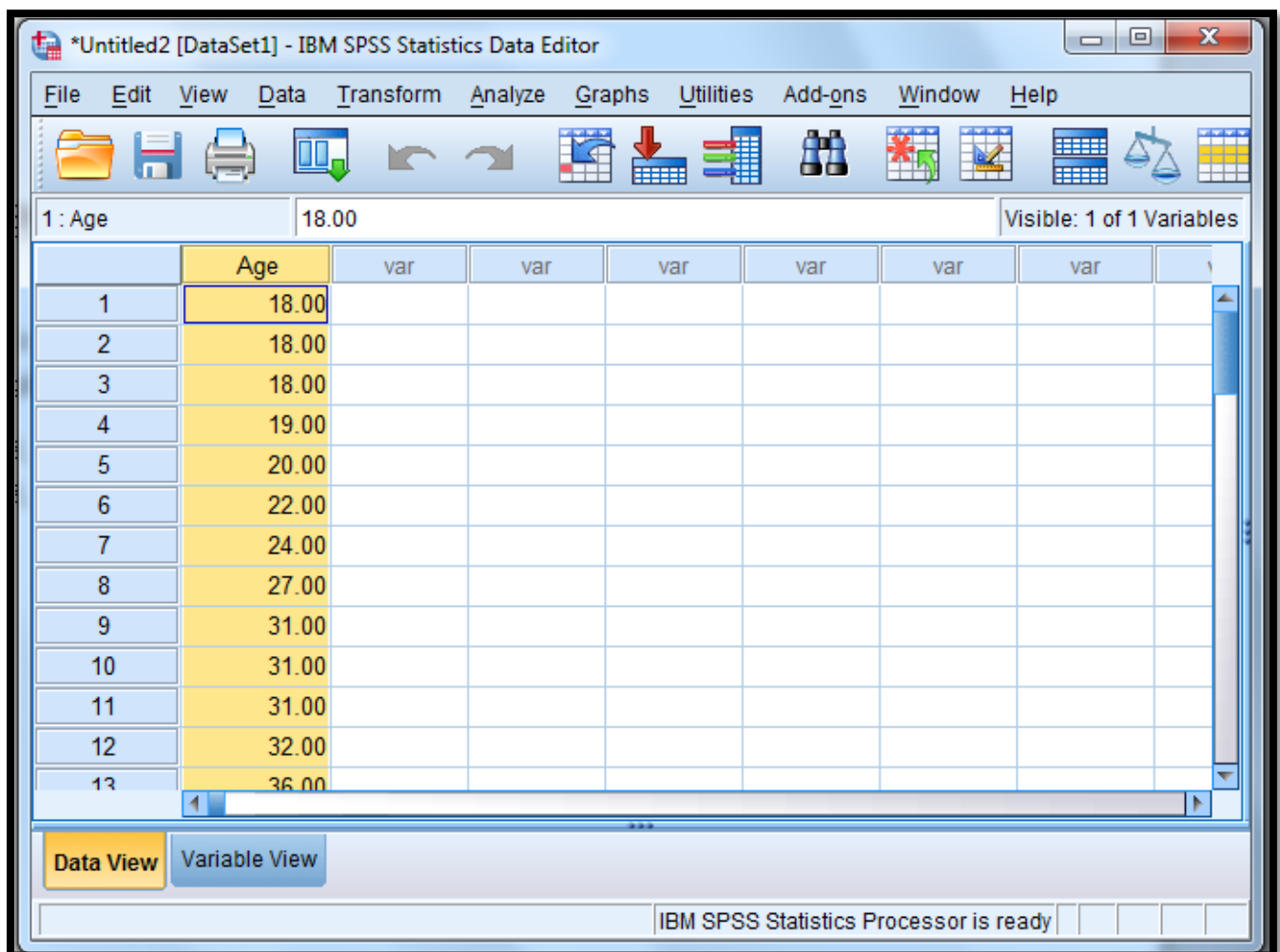


# Generating a Stem and Leaf Plot in SPSS

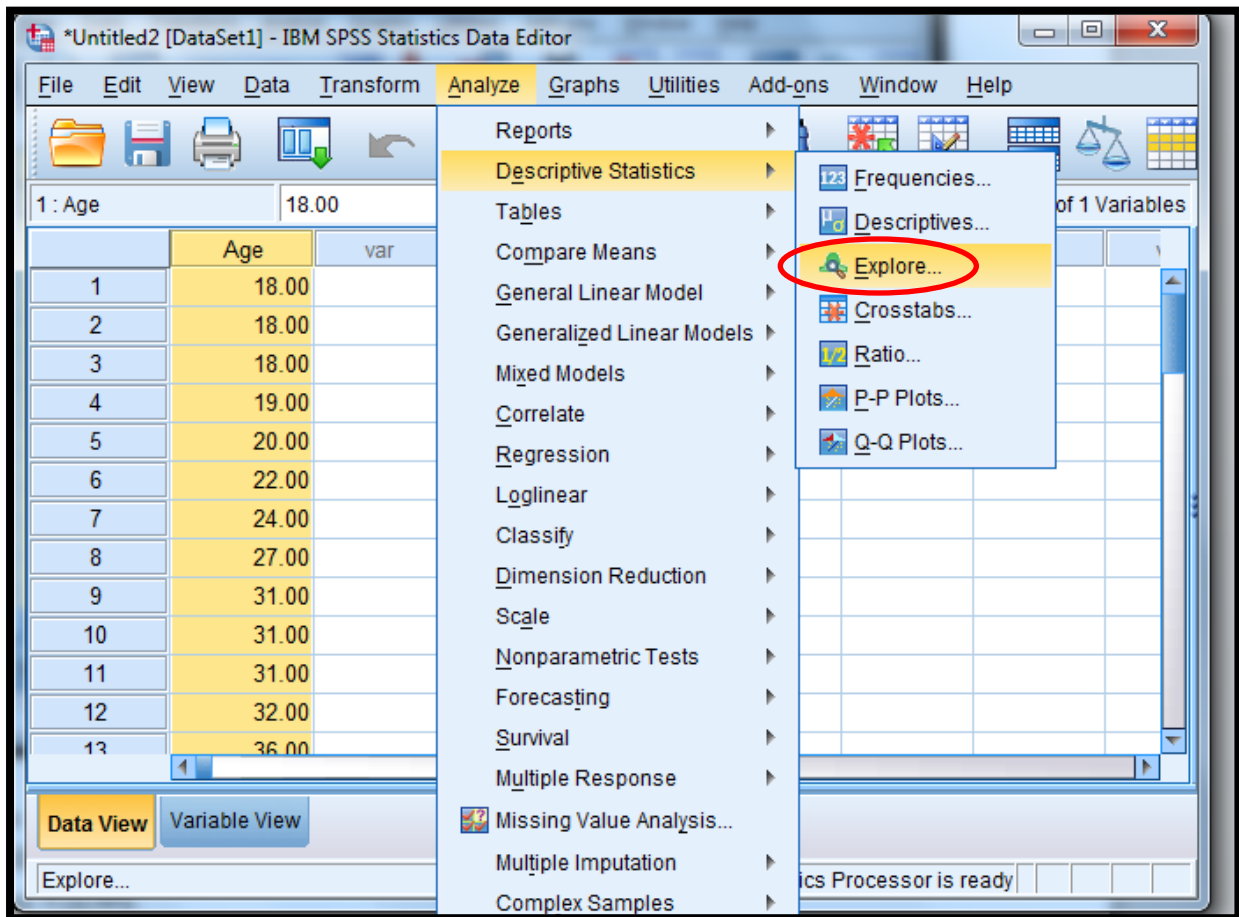
In order to generate a stem and leaf plot in SPSS, firstly you must input your data. For example for the following data set of 30 nurses ages:

18, 18, 18, 19, 20, 22, 24, 27, 31, 31, 31, 32, 36, 38, 39, 39, 44, 45, 47, 47, 48, 49, 49, 53, 55, 56, 56, 60, 61, 77.

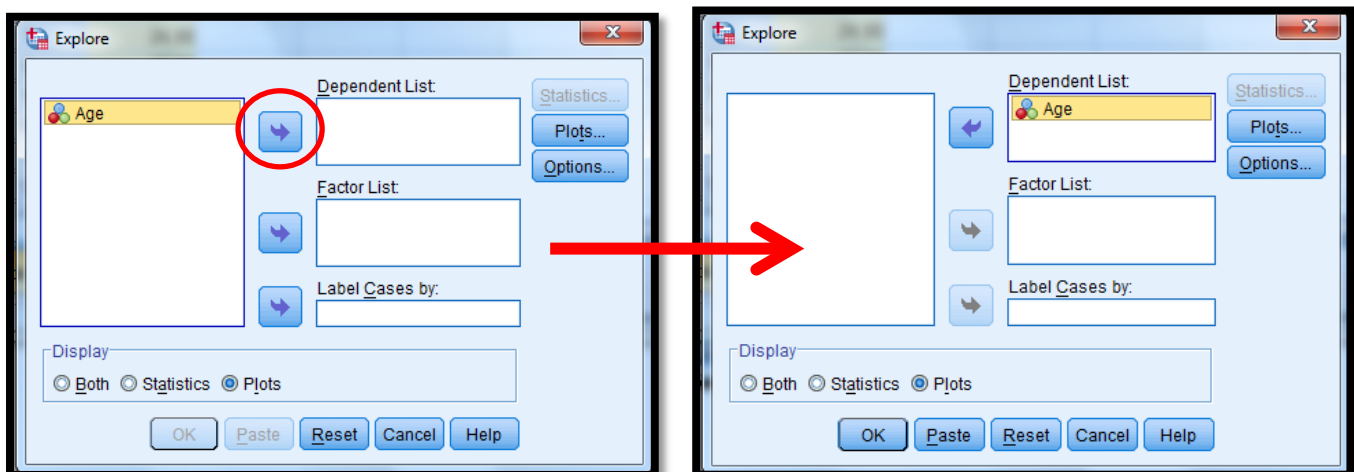
In SPSS:



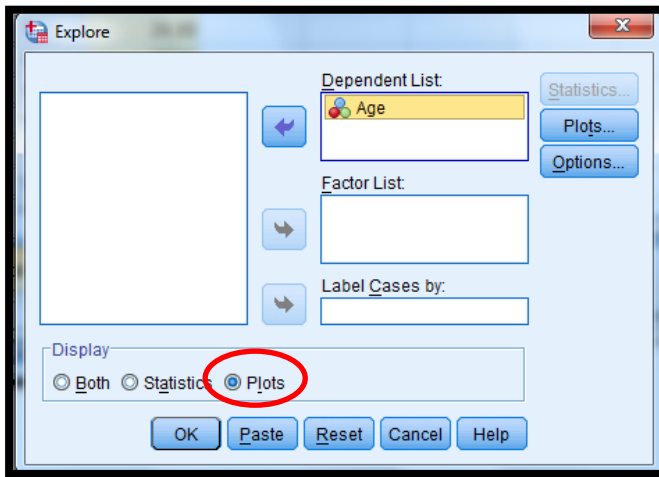
(This data can be easily inputted by hand). To generate a stem and leaf plot, in the toolbar at the top select “Analyze”, then “Descriptive Statistics” then “Explore” as follows:



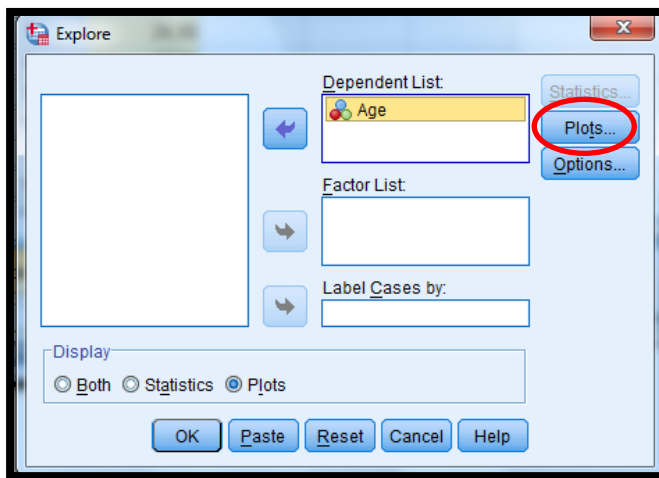
This opens a window which allows us to define a stem and leaf plot. Firstly we move the variable we want to use into the “**Dependent List**”, by selecting the variable then using the arrow to move it across, as follows:



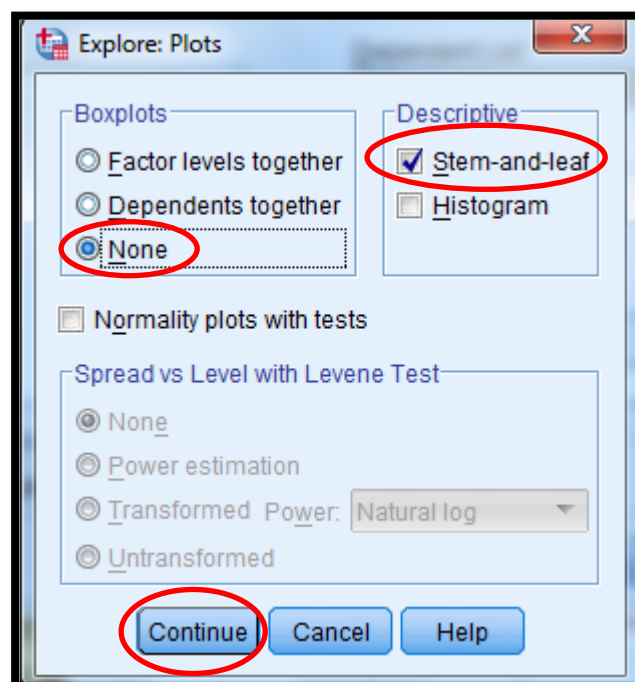
As it is only a stem and leaf plot we are interested in, in the display box make sure you select the “**plots**” option only, as follows:



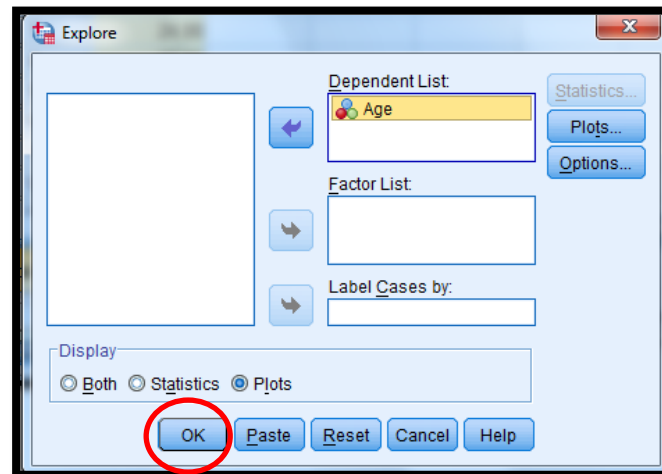
Now select the “plots” option on the right hand side:



A new window will appear. Here we chose “none” for boxplots and “Stem-and-leaf” for descriptive and select “continue”, as follows:



Finally, select “okay”, as follows:



A new window will then open displaying the stem and leaf plot, as follows:

